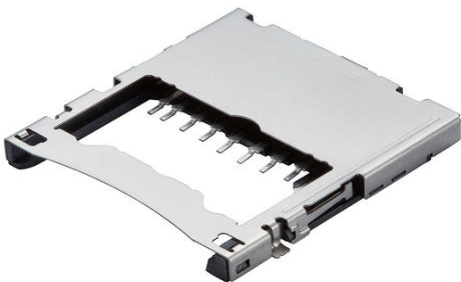




Part Number : [5009980900](#)
Product Description : 2.50mm Pitch SD Memory Card Connector, Shielded, Top Mount, Push-Push Ejector, Embossed Tape Packaging
Series Number : 500998
Status : Obsolete
Product Category : Memory / SIM Card Connectors



Documents & Resources

[Symbol and Footprint \(Multi-Format\)](#)


Specifications

[SPK-500998-001-001.pdf](#)

[PS-500998-003-001.pdf](#)

Product Environment Compliance

Compliance

GADSL/IMDS	Not Relevant
China RoHS	 per SJ/T 11365-2006
EU ELV	Not Relevant
Low-Halogen Status	Low-Halogen per IEC 61249-2-21
REACH SVHC	Not Contained per D(2025)4165-DC (25 June 2025)
EU RoHS	Compliant per EU 2015/863

Compliance Statements

- EU RoHS
- REACH SVHC
- Low-Halogen

Industry Documents

- IPC 1752A Class C
- IPC 1752A Class D
- Molex Product Compliance Declaration
- IEC-62474
- chemSHERPA (xml)

Substances of Interest

- PFAS

EU RoHS Certificate of Compliance

Additional Product Compliance Information

Part Details

General

Status	Obsolete
Category	Memory / SIM Card Connectors
Series	500998
Description	2.50mm Pitch SD Memory Card Connector, Shielded, Top Mount, Push-Push Ejector, Embossed Tape Packaging
Product Name	SD Card
Style	Push-Push
UPC	822348660223

Agency

UL	E29179
----	--------

Electrical

Current - Maximum per Contact	0.5A
Shielded	Yes
Voltage - Maximum	100V AC

Physical

Card Detection Switch	Open
Circuits (Loaded)	9
Color - Resin	Black
Durability (mating cycles max)	10000
Ejector Button Side	N/A
Flammability	94V-0
Material - Contact	Copper Alloy
Material - Plating Termination	Gold, Tin
Material - Resin	High Temperature Thermoplastic

Net Weight	1973.271/mg
Packaging Type	Embossed Tape on Reel
PCB Locator	Yes
PCB Retention	Yes
Pitch - Mating Interface	2.50mm
Temperature Range - Operating	-25° to +90°C
Termination Interface Style	Surface Mount

Mates With / Use With

Use with Part(s)

Description	Part Number
Use With	SD Card